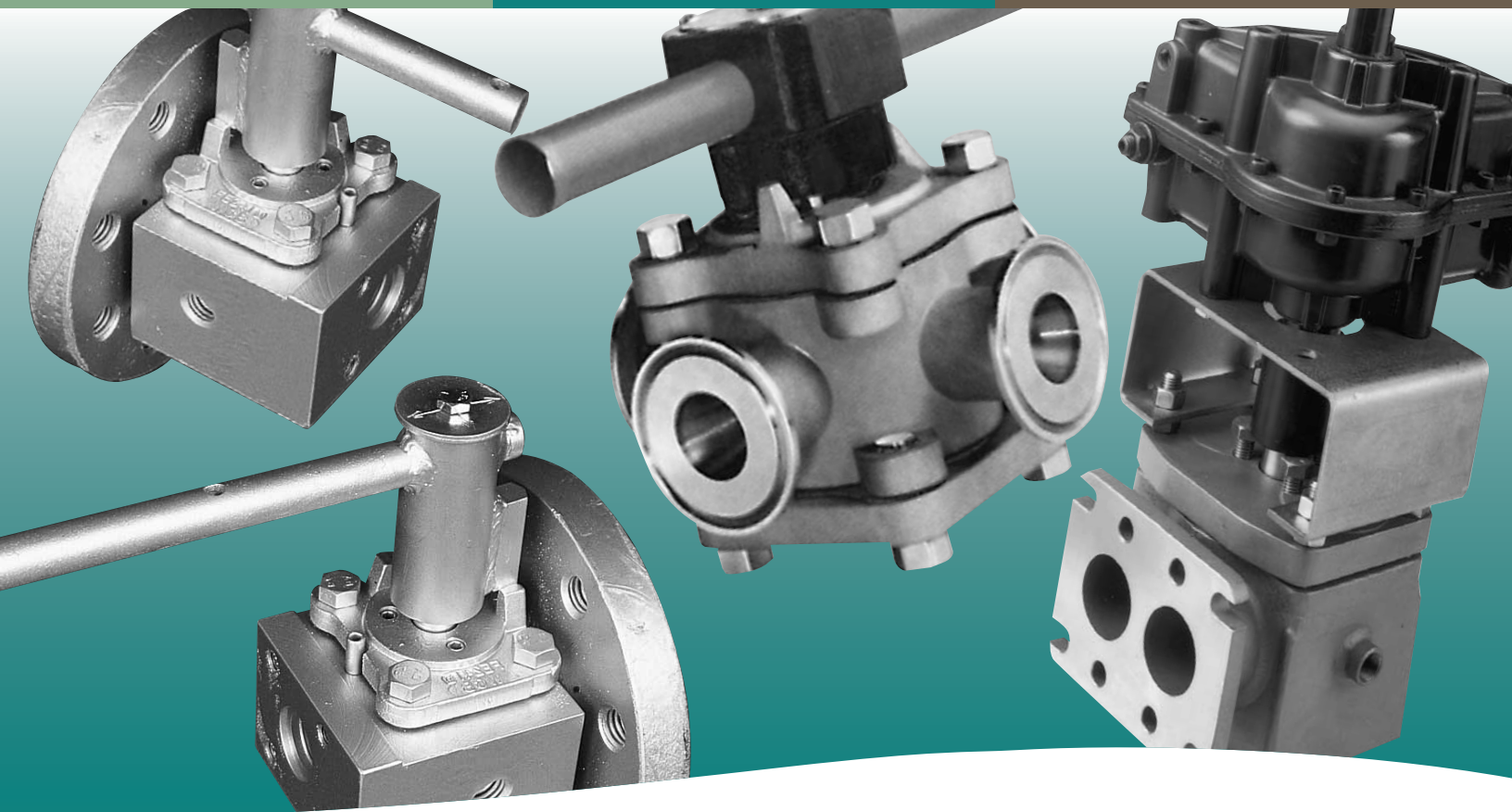


# XOMOX<sup>®</sup>

brands you trust.



Xomox Special Products Group

**CRANE**

ChemPharma Flow Solutions

[www.cranepharmachem.com](http://www.cranepharmachem.com)

# Xomox Special Products Group



## A responsive team.

The Xomox Special Products Group is a gathering of highly talented and inventive specialists who work with you to solve special valving problems.



## Custom designs and modifications.

The Special Products Group designs, manufactures, and modifies valves for:

- Unusual and difficult applications.
- Greatly extended service life.
- Dramatically reduced maintenance and repair frequency.
- Extremely complex or compact processing systems.

Valve types include:

- Ball
- Butterfly
- Check
- Gate
- Globe
- Hybrid designs
- Plug

Special Product Group valves are available with a wide range of specifications:

- Sizes from 1/4 to 102 inches
- Operating temperatures from -400°F to 1300°F
- Pressures from full vacuum to +1650 psig
- 2, 3, 4, & 5-way configurations

The group's metallurgy and manufacturing team regularly works with the following materials:

- Alloy 20
- Bronze
- Carbon steel
- Ductile iron
- Ferralium
- Hastelloy
- Inconel
- Nickel
- Monel
- Nickel-aluminum-bronze
- Stainless steels
- Tantalum
- Titanium
- Zirconium

Plastic sleeve and lining materials include:

- Tufline-475
- Tufline-600
- PFA
- PTFE
- 15% Glass Filled PTFE
- 25% Glass Filled PTFE
- Inox
- Carbon Filled PTFE
- TFM GR.1700
- TFM GR.4105
- UHMWPE
- Xomox-7

Unique valving systems have been developed for use in a wide range of industries including:

- Biological
- Chemical
- Coal gasification and liquification
- Food processing
- Fossil and nuclear power
- Mining
- Oil and gas processing
- Oil refining
- Oil shales and tar sands
- Paint
- Petrochemical
- Pharmaceuticals
- Pulp and paper
- Rail and truck
- Rare gas manufacture

Special actuator systems can include tandem linkages, fusible link fail-safe and other fail-safe configurations.

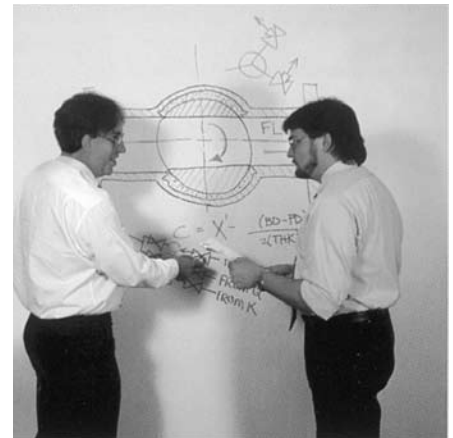
## Innovative designs.

The Special Products Group team brings decades of design experience to your project. To meet your specific requirements, the group can draw on knowledge gained from solving thousands of unique valving problems for other processors.

## A customer focused approach.

The Special Products Group Engineers and Xomox Sales Engineers work with plant engineering personnel to get a firsthand understanding of special valving needs. They quickly respond with cost-effective proposals.

From initial design through final installation, the Special Products Group works closely with customer personnel to assure that their unique requirements are met.



## Challenge Us!

For more than three decades, hundreds of innovations in processing began with a call to the Special Products Group.

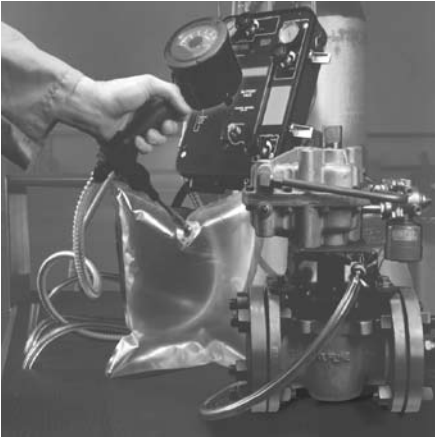
This hand-picked crew of engineers and specialists relish your challenge. They are used to the unusual and they regularly provide practical and economical solutions for the most difficult valving problems.

That's why they get the tough jobs.

## Call us.

Give the Special Products Group an opportunity to demonstrate how specially designed valving can often improve processing efficiency and reduce overall operating costs.

Phone your nearest Xomox regional office or contact the Special Products Group directly at **513-745-6164**.



## Unmatched quality control.

Exhaustive quality control procedures are carried out at every step of manufacturing from the foundry to final assembly.

Both individual parts and completed valves are inspected numerous times. Every valve is pressure tested for tight shutoff.

Valves are available specifically tested and tagged to indicate conformity to ANSI B16.34 shell tests and MSS SP-61 seat test requirements.

Testing may include X-ray, liquid penetrant, magnetic particle, ultrasonic, helium mass spectrometer, hydrostatic shell, torque, and operability tests to meet or exceed industry standards as well as the unique demands of your specific application.

Special Products field engineers can work with your plant personnel to field test a prototype in your application.

## Economical solutions.

The valving solutions from the Special Products Group often pay for themselves many times over with increased efficiencies, reduced downtime, and prolonged service life. Processors usually quickly recoup their investment in these special products.

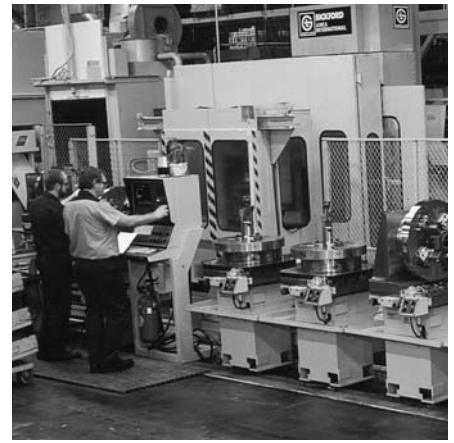
Special Products Group valving solutions often facilitate cost effective processing procedures previously considered impractical if not impossible.

## Creative modifications.

With their wealth of experience, the Special Products Group can often modify and combine existing valve designs to economically meet your unique requirements.

Often they can offer patented solutions not available from any other source.

Tomorrow's valving solutions begin here. Every day processors are stretching the envelope of valving limitations. Whatever valving criteria you can imagine, the Special Products Group is ready and eager to accept the challenge and offer solutions.



©Copyright Xomox Corporation 1998, 2009. All rights reserved. Xomox®, Tuflin®, and Matryx® are registered trademarks of Xomox Corporation. Xomox XRP™ is a trademark of Xomox Corporation. Crane® is a registered trademark of Crane Co. Company.

## Samples of successful problem solving.

The valves and actuators shown on the following pages are only a small sampling of the valving challenges successfully and economically met by the Special Products Group.

These and other valves are now available for adaptation to economically meet your special valving requirements.



**Oversize valves.**

Two-way, three-way, and four-way sleeved plug valves. Choose from a wide range of body and plug materials with standard and fire tested top seals, as well as a host of other options.

A variety of sleeve materials are available to assure tight shutoff and extended, reliable operation even in the most difficult applications.

These valves are virtually maintenance free.

Sizes 14 to 24 inch.  
ANSI Classes: 150, 300, and 600DR.



**Bar stock valves.**

Two-way sleeved plug valves are available in special or exotic bar stock materials.

Sizes 1/4 to 6 inch. ANSI Classes 150, 300, and 600. Flanged, screwed, or weld end connections.

**Steam traced high performance butterfly valves.**

These valves facilitate the processing of sulfur or any condensable or agglomerating media. The steam tracing in the body and disc helps maintain a consistent elevated temperature across the valve seat surface to reduce media accumulation.

Sizes 6 to 72 inch. ANSI Classes: 150, 150DR, 300, and 600. Options include steam purged bearings and NACE trim.

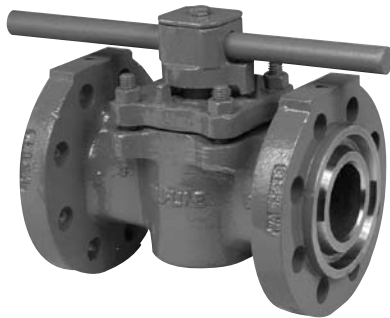


### **Non-ferrous plug valves.**

These valves provide superior corrosion resistance in sea water, saline crude oil, or brackish water service. For flexibility of system design, 2-way and 3-way configurations are available. Choose from body and plug materials including: bronze, silicon bronze, aluminum bronze, and nickel aluminum bronze.

Sizes 1/2 to 12 inch.  
ANSI Classes 150 and 300.

### **Ring type joint valves**



These valves provide a superior flange seal. They are available in 2-way and 3-way configurations.

Sizes 1/2 - 24 inch.  
ANSI Classes 150, 300, and 600



### **Quick clamp end valves.**

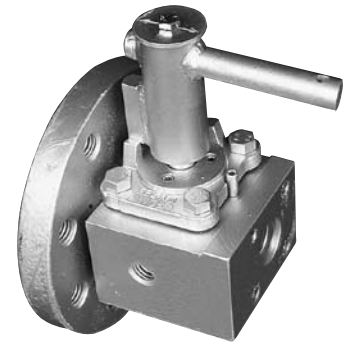
These valves are fast and easy to remove for cleaning and other purposes. They are available in 2, 3, and 4-way configurations.

Size 1/2 - 6 inch.  
ANSI Class 150 and 300.

### **Bottom discharge valves.**

These valves are specially designed for use in chemical/polymer reactors, storage vessels, and transport vessels.

Sizes 3 - 12 inch.  
ANSI Classes 150 and 300.

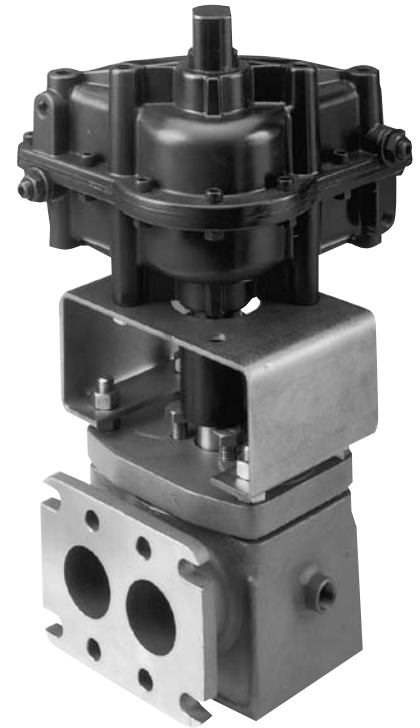
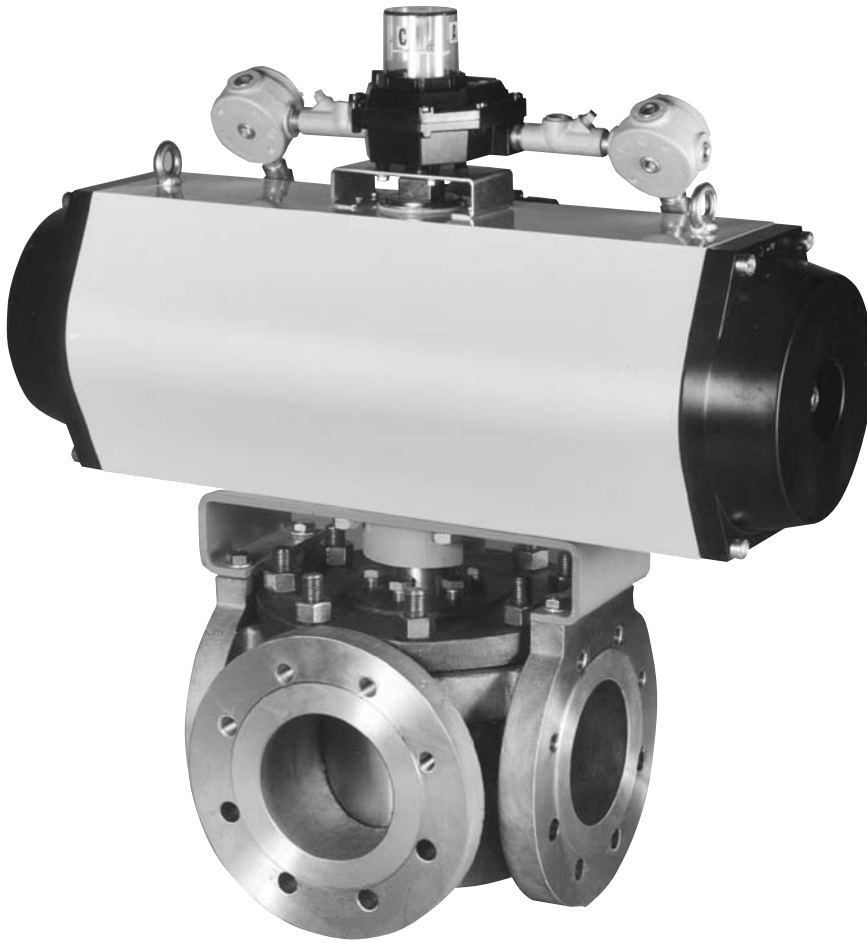


### **Compact three-way injector valves.**

This valve provides three different port connections in an extremely compact configuration. It is part of a catalyst feeder for a plastics process.

Sizes 1/2 and 3/4 inch.





### Side entry 3-way valves.

Tufline 3-way sleeved plug valves with standard or full ports in a variety of flow configurations.

Sizes 1/2 to 24 inch.  
ANSI Classes 150, 300, and 600.

### 120° full port 3-way sleeved plug valves.

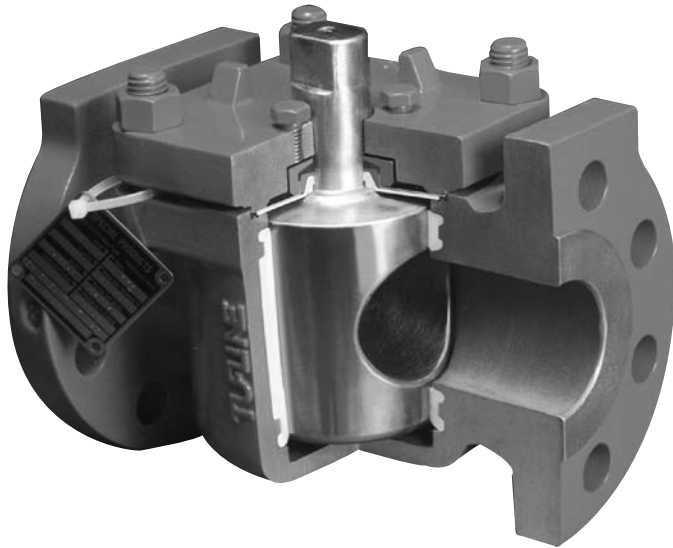
Full-area, round ports and 120° port orientation increase flow capacity and minimize pressure loss. This design allows transflow when switching. It can be cleaned by mechanical pig.

Sizes 1 to 12 inch.  
ANSI Classes 150, 300, and 600.



### Unique food and pharmaceutical valves.

The Special Products Group has designed a number of valves for special food and pharmaceutical applications. Valves are available for media of unusual consistency and for applications where extreme purity is vital.



### **Full port sleeved plug valves.**

For unrestricted flow and cleaning by mechanical pig, these valves are available in 2-way, 3-way, and 4-way configurations.

Sizes  $\frac{3}{4}$  to 12 inch and larger.  
ANSI Classes: 150, 300, and 600.



### **Special valves, actuation, and accessories.**

Shown at left is just one example of the wide variety of valving assemblies the Special Products Group can supply.

This is a fully automated dual valve assembly. The lower valve controls a leak-off connection at the bottom of the upper valve to avoid fluid entrapment. Both valves have patented fugitive emissions top seals.

